



CLION-MARINE

*A NEW GENERATION OF AIR-CONDITIONING
SYSTEMS FOR BOATS AND YACHTS*



CLION-MARINE
ENGINE DRIVEN KITS

CLION-MARINE ENGINE DRIVEN KITS

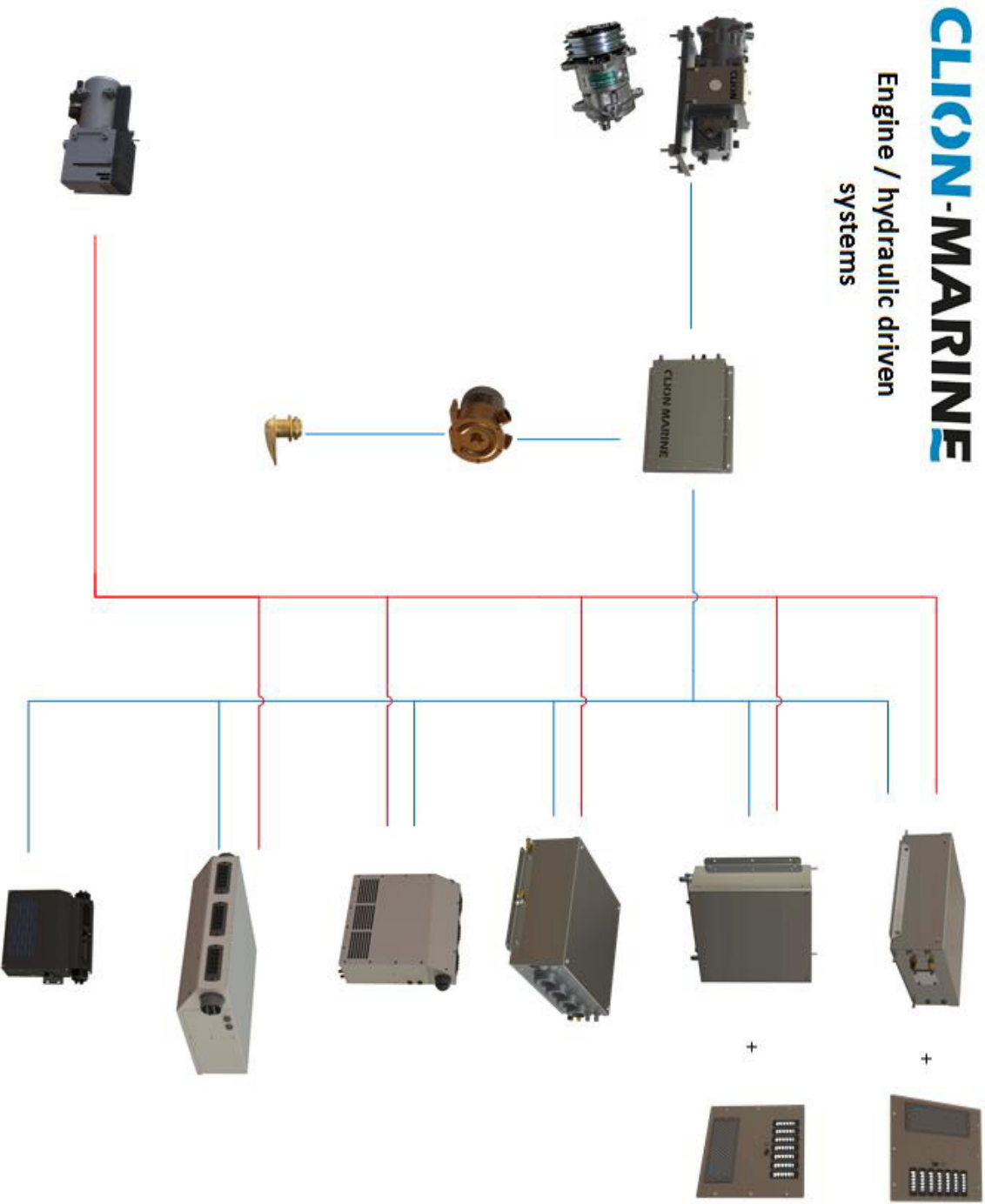
Index

Engine driven kits.....	pg.3
Specifications Evaporators.....	pg.4-7
Specifications Condensing kit.....	pg. 8
Specifications Self Contained Wall engine driven.....	pg. 9

About Clion-Marine

The Clion-Marine air-conditioning systems combine the best of 2 worlds, the already existing inverter technology and the knowledge and experience of Clion-Marine with marine climate systems. The air-conditioning systems guarantee a modulating and quiet operation with low energy consumption, but maximum comfort.

Engine driven kits



Evaporator Commercial Outdoor (CO)



- Installation on roof or outdoor wall
- Stainless steel housing
- Optional heating coil
- Optional electrical heating

Evaporators

	CR 20.0 Rooftop	CW 20.0 Outdoor
Part number		
Capacity (BTU/h)	17.060-20.472	17.060-20.472
Capacity (kW)	5-6	5-6
Voltage	12/24 VDC	12/24 VDC
Power consumption (A)	30/15	30/15
Weight (kg)	-	-
Dimensions (lxwxh) (mm)	634*208*598	634*208*636
Airflow (m³/h)	1.000	1.000
Material	Stainless Steel	Stainless Steel
Heating coil 6kw	Optional	Optional
Electrical heating 230v	Optional	Optional



Dimensions air dividing plate

650*49*525

On/off switch and fanspeed regulator is integrated in air dividing plate

Clion-Marine can provide complete kits including engine or hydraulic driven compressors, seawater cooled condensers, prewired cable looms and refrigerant hoses. Contact our sales department for all the options

Evaporators Commercial (C)

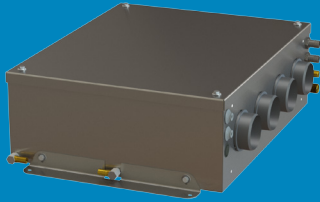


- Wall and ceiling models
- Aluminium housing
- Optional heating coil
- Optional electrical heating

Evaporators

	CC 20.0	CW 20.0
Part number		
Capacity (BTU/h)	17.060-20.472	17.060-20.472
Capacity (kW)	5-6	5-6
Voltage	12/24 VDC	12/24 VDC
Power consumption (A)	30/15	30/15
Weight (kg)	-	-
Dimensions (lxwxh) (mm)	567*680*185	680*185*567
Airflow (m³/h)	1.000	1.000
Material	Aluminium	Aluminium
Heating coil 6kw	Optional	Optional
Electrical heating 230v	Optional	Optional

Clion-Marine can provide complete kits including engine or hydraulic driven compressors, seawater cooled condensers, prewired cable looms and refrigerant hoses. Contact our sales department for all the options



Evaporators Commercial ducting

- Unit with 75mm duct rings
- Stainless steel housing
- Optional heating coil
- Optional electrical heating

Evaporators

	CD 20
Part number	
Capacity (BTU/h)	17.060-20.472
Capacity (kW)	5-6
Voltage	12/24 VDC
Power consumption (A)	30/15
Weight (kg)	-
Dimensions (l x w x h) (mm)	500*654*205
Airflow (m³/h)	1.000
Material	Stainless steel
Heating coil 6kw	Optional
Electrical heating 230v	Optional

Clion-Marine can provide complete kits including engine or hydraulic driven compressors, seawater cooled condensers, prewired cable looms and refrigerant hoses. Contact our sales department for all the options

Capacities are rated at an evaporating temperature of 7,2°C and a condensation temperature of 38°C



Evaporators commercial compact

- PVC housing
- Wall model

Evaporators

	CW 14 compact
Part number	
Capacity (BTU/h)	14.000
Capacity (kW)	4,6
Voltage	12/24 VDC
Power consumption (A)	30/15
Weight (kg)	-
Dimensions (lxwxh) (mm)	379*420*145
Airflow (m³/h)	600
Material	PVC housing
Heating coil 6kw	n/a
Electrical heating 230v	n/a

Clion-Marine can provide complete kits including engine or hydraulic driven compressors, seawater cooled condensers, prewired cable looms and refrigerant hoses. Contact our sales department for all the options

Capacities are rated at an evaporating temperature of 7,2°C and a condensation temperature of 38°C



Condensing kit

- Seawater cooled condensor
- dryer and pressure switch

Condensor	
	C 30.0
Part number	
Capacity (BTU/h)	30.026
Capacity (kW)	8,8
Voltage	12/24 VDC
Power consumption (A)	-
Weight (kg)	-
Dimensions (lxwxh) (mm)	621*100*375
Minimum waterflow (m³h)	1,26



Self Contained (SC-WE)

Wall mounted self contained unit in stainless steel housing.

Ideal solution for wheelhouses, patrolboats and commercial vessels.

Commercial line

SC-W 28.0

Part number	CM0000113151
Capacity (BTU/h)	20.000
Capacity (kW)	6
Voltage	12/24/220
Power consumption (A)	-
Weight (kg)	-
Airflow auto modus (m ³ /h)	750-960
Max airflow manual (m ³ /h)	1200
Dimensions (LxWxH)	800*275*851
Drain connection (mm)	12 (4x)

Clion-Marine can provide complete kits including engine or hydraulic driven compressors, seawater cooled condensers, prewired cable looms and refrigerant hoses. Contact our sales department for all the options

Netherlands

Clion-Marine
Marconistraat 2
3281 NB Numansdorp

+31 (0)186-621955
info@clion-marine.com
www.clion-marine.com



CLION-MARINE

